

DREAMWORKS  
**TROLLHUNTERS**  
FROM GUILLERMO DEL TORO

A NETFLIX ORIGINAL SERIES

CREATE YOUR OWN  
**BATTLE ARMOR  
& SWORD**

YOU WILL NEED:

Cardboard  
Cardstock  
Paper  
Aluminum Foil  
Scissors

Double stick tape  
or glue  
2 rubber bands  
(cut and tied at ends)  
Stapler  
Felt-tipped marker

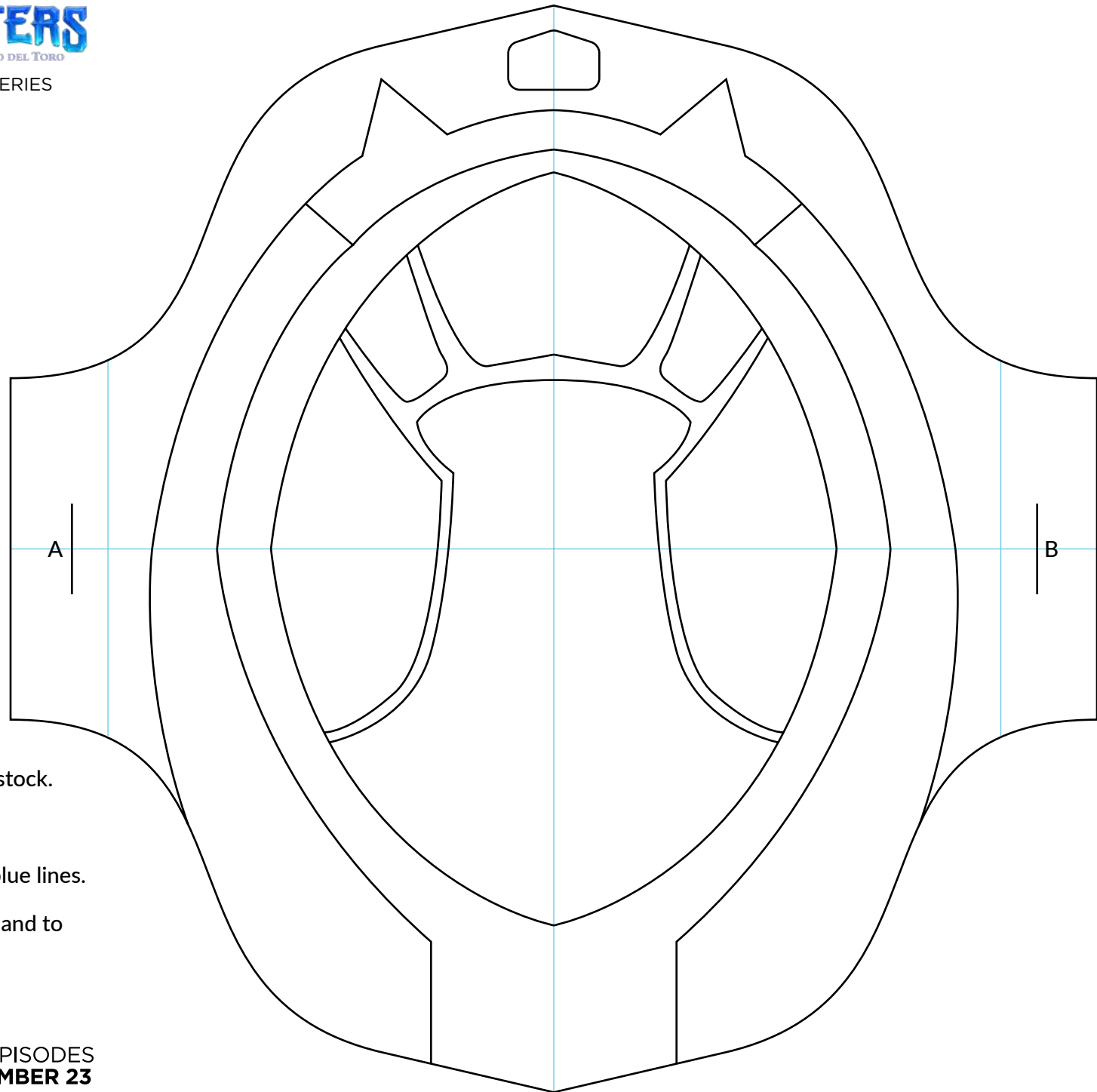
**NETFLIX** | ALL EPISODES  
DECEMBER 23

DreamWorks Trollhunters © 2016 DreamWorks Animation LLC. All Rights Reserved.





A NETFLIX ORIGINAL SERIES



## Kneepads

Print 2 copies on gray cardstock.

Cut along outer edges.

Score and fold along light blue lines.

Staple the ends of rubber band to points A and B

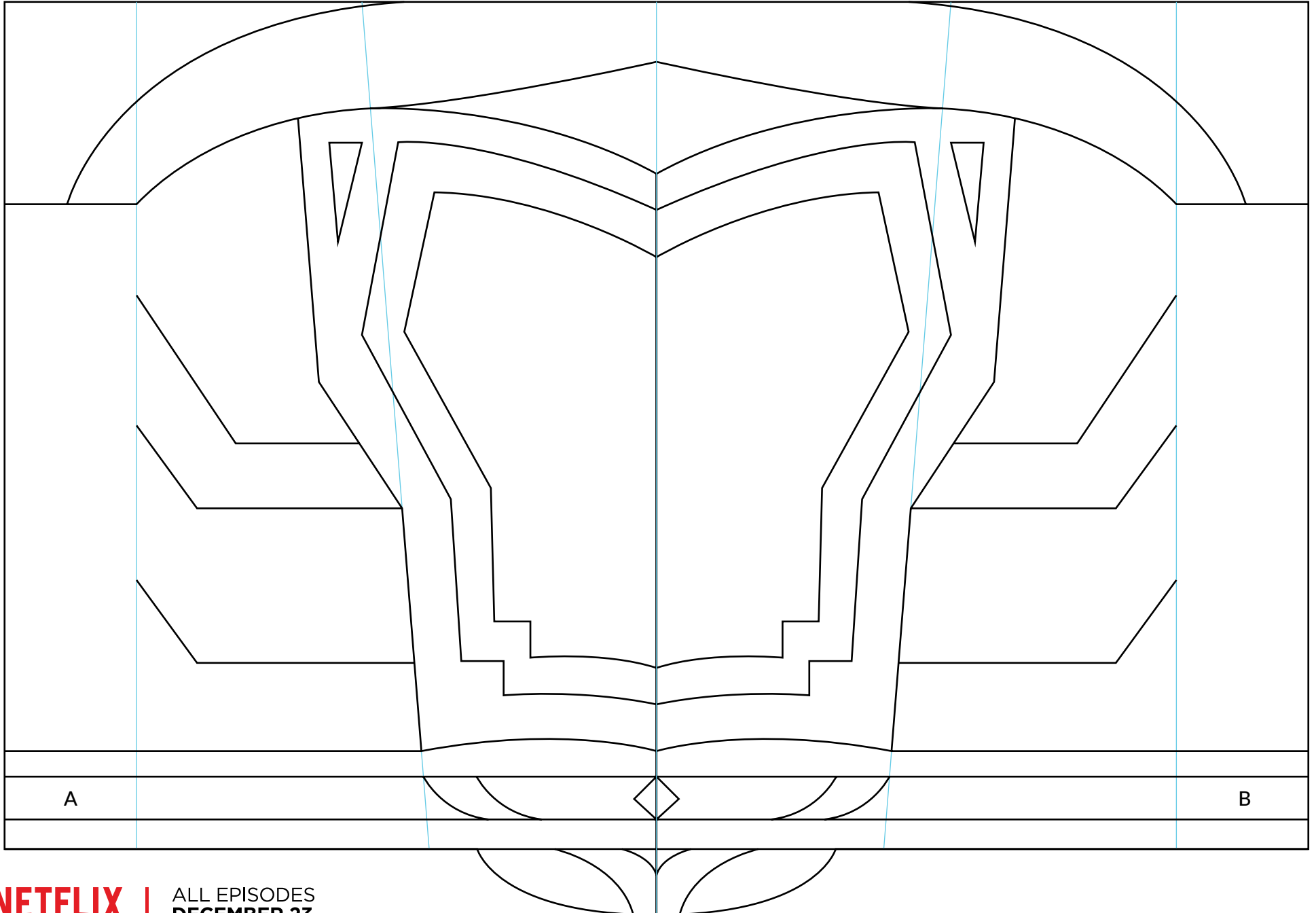
**NETFLIX** | ALL EPISODES  
**DECEMBER 23**



A NETFLIX ORIGINAL SERIES

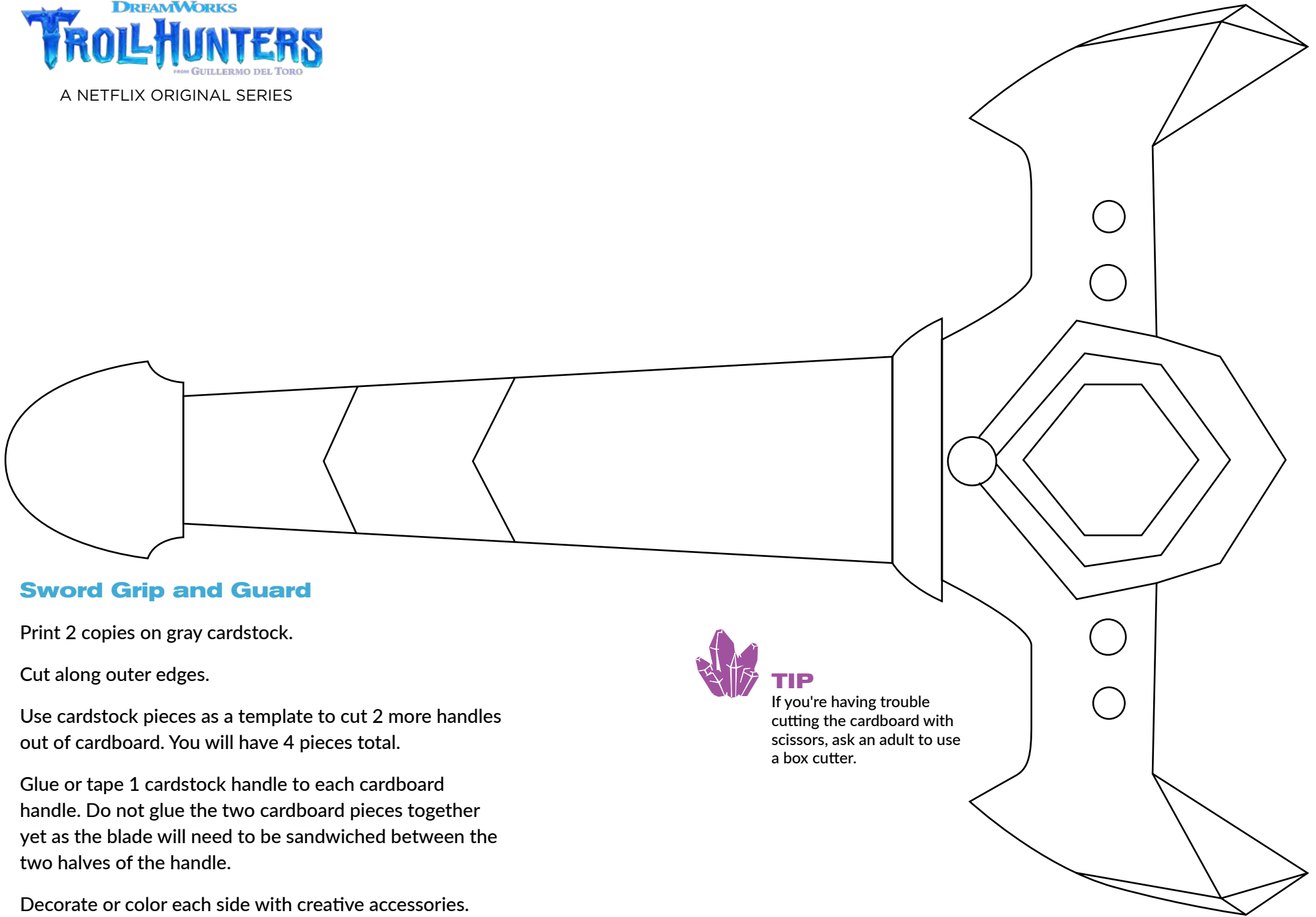
## Gauntlets

Print 2 copies on gray cardstock. Cut along outer edges. Score and fold along light blue lines. Tape flap A to flap B.





A NETFLIX ORIGINAL SERIES



## Sword Grip and Guard

Print 2 copies on gray cardstock.

Cut along outer edges.

Use cardstock pieces as a template to cut 2 more handles out of cardboard. You will have 4 pieces total.

Glue or tape 1 cardstock handle to each cardboard handle. Do not glue the two cardboard pieces together yet as the blade will need to be sandwiched between the two halves of the handle.

Decorate or color each side with creative accessories.



### TIP

If you're having trouble cutting the cardboard with scissors, ask an adult to use a box cutter.

## Sword Blade (Part 1)

Print 1 copy of both blade pieces on plain paper.

Cut along outer edges.

Tape 2 blade pieces together to make one piece.

Use paper as a template to cut 1 blade out of cardboard.

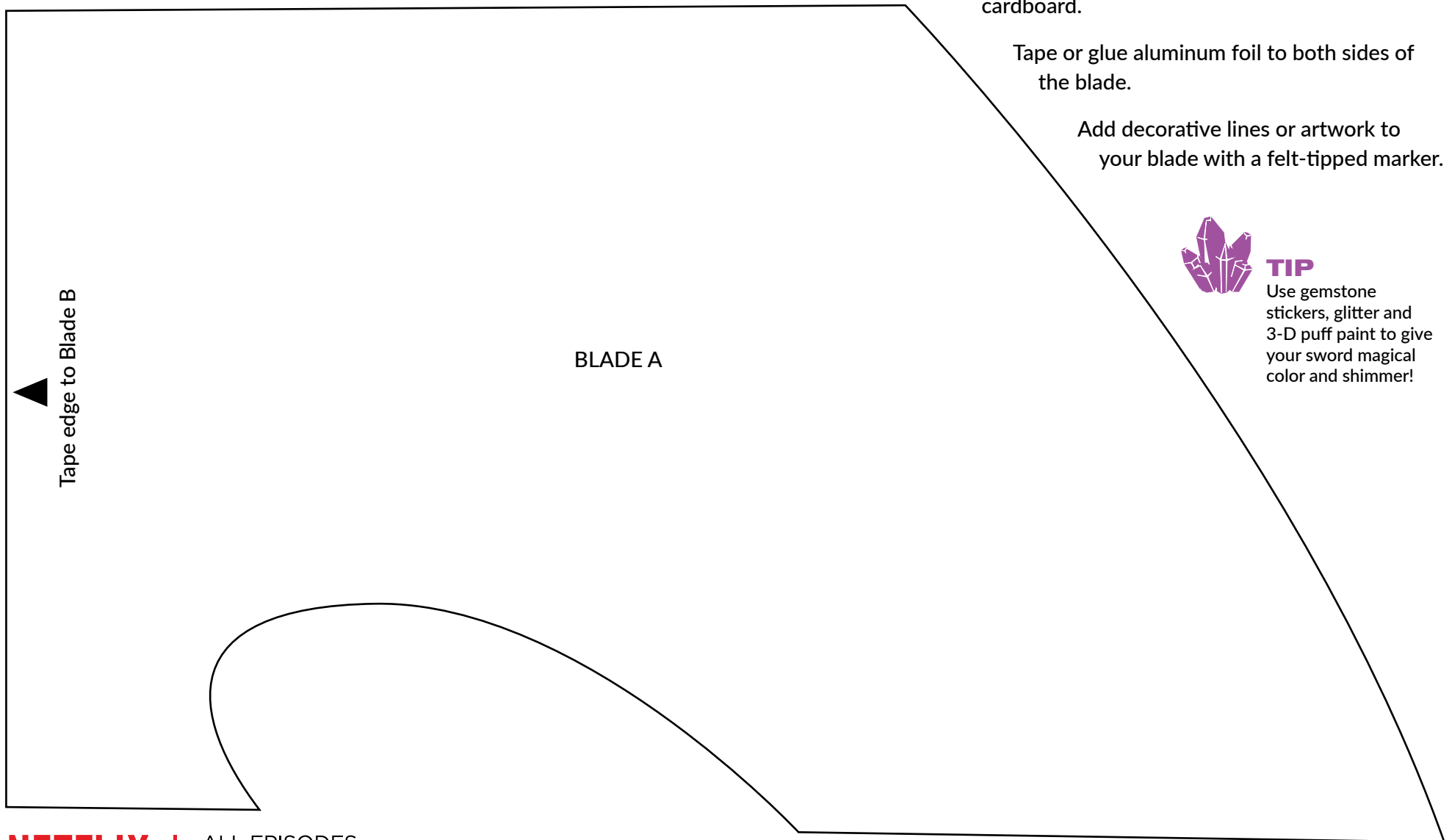
Tape or glue aluminum foil to both sides of the blade.

Add decorative lines or artwork to your blade with a felt-tipped marker.



### TIP

Use gemstone stickers, glitter and 3-D puff paint to give your sword magical color and shimmer!





A NETFLIX ORIGINAL SERIES

## Sword Blade (Part 2)

Sandwich finished foil blade between 2 finished handle pieces. Affix the handles to the blade with glue or tape.

